

DÜZENLEME SINIRI

4494700 +

+

+

4494600 +

+

+

4494500 +

+

+

4494400 +

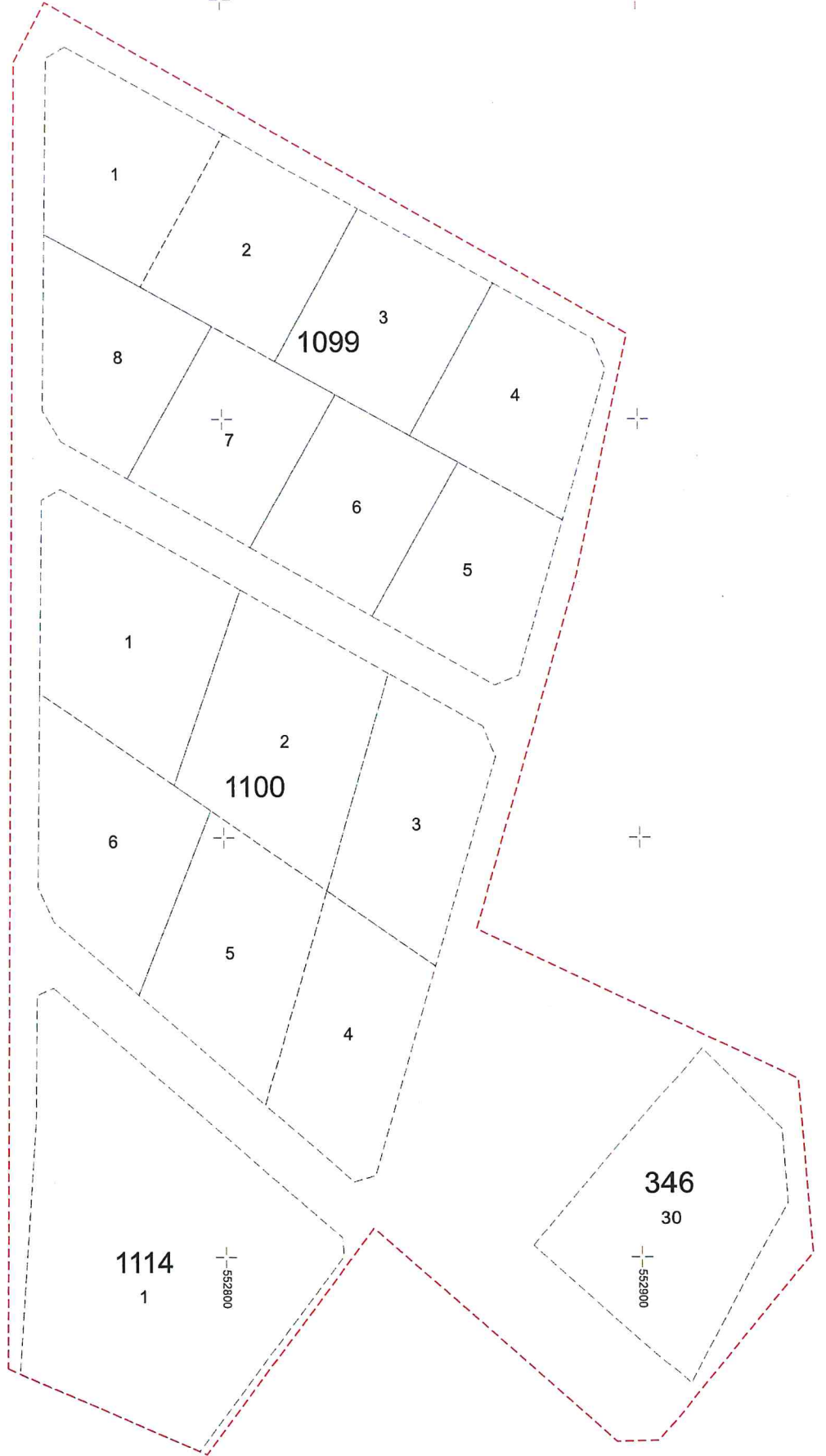
+

+

552700

552800

552900



PARSELASYON HARİTASI

4494700



4494600



4494500



4494400

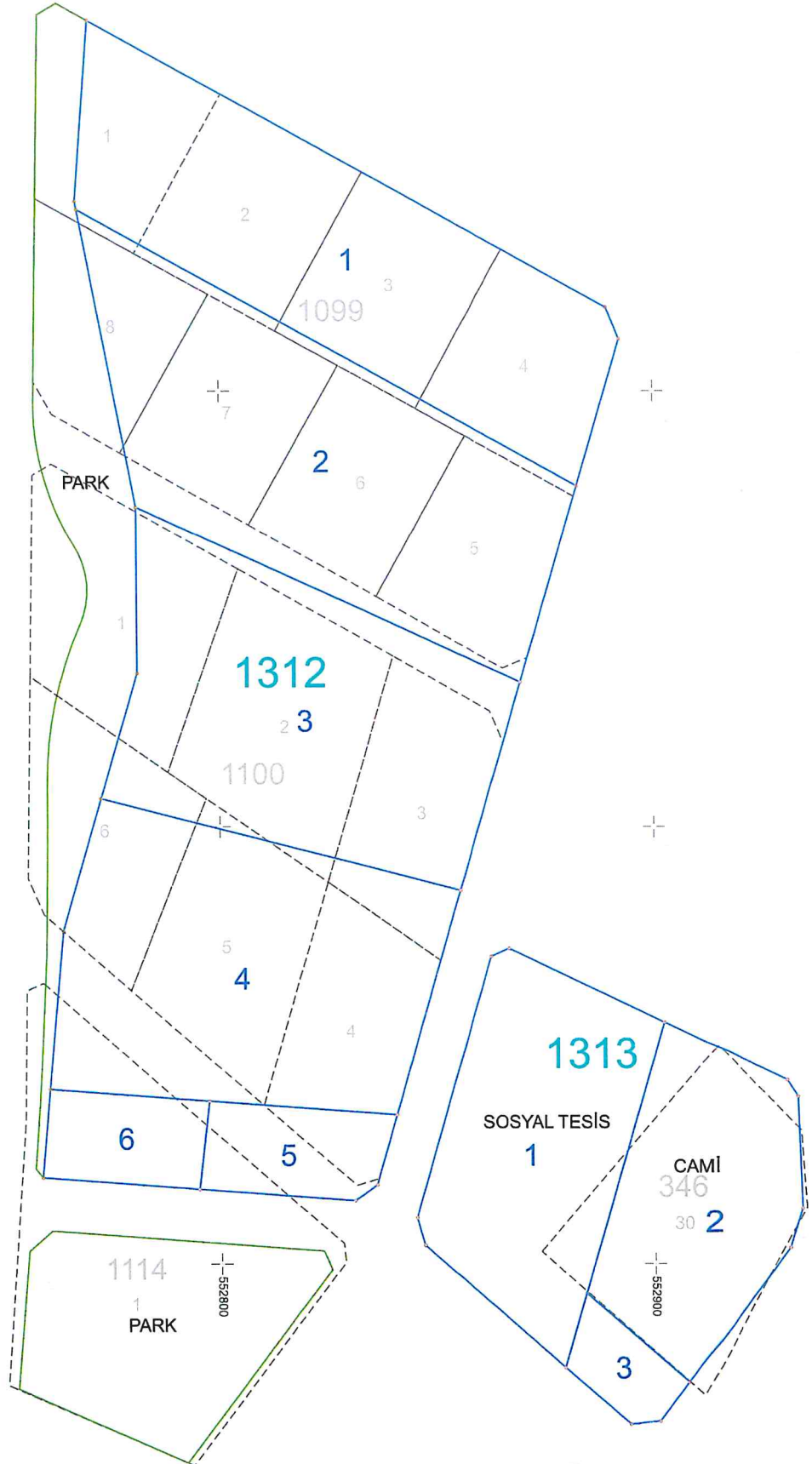
552700



552800



552900



Alan Hesabı

Ada Parsel	Hesap Alan	Nokta No	Y	X	Cephe
1312/1	5331.18	1312/1	552882.49	4494578.24	131.39
		1312/2	552767.39	4494641.61	1.95
		1312/3	552767.01	4494643.52	41.42
		1312/4	552769.97	4494684.84	136.30
		1312/5	552889.37	4494619.10	7.78
		1312/6	552892.33	4494611.91	35.08
1312/2	5754.38	1312/1	552882.49	4494578.24	46.93
		1312/9	552869.31	4494533.20	97.15
		1312/7	552780.87	4494573.41	69.52
		1312/2	552767.39	4494641.61	131.39
1312/3	5083.04	1312/7	552780.87	4494573.41	97.15
		1312/9	552869.31	4494533.20	49.76
		1312/11	552855.35	4494485.43	85.36
		1312/10	552772.63	4494506.52	29.96
		1312/8	552781.05	4494535.27	38.14
1312/4	5083.03	1312/10	552772.63	4494506.52	85.36
		1312/11	552855.35	4494485.43	53.49
		1312/15	552840.33	4494434.10	43.17
		1312/14	552797.28	4494437.28	36.85
		1312/13	552760.54	4494440.01	36.28
		1312/12	552763.73	4494476.14	31.65
1312/5	832.34	1312/14	552797.28	4494437.28	43.17
		1312/15	552840.33	4494434.10	16.75
		1312/17	552835.63	4494418.02	6.22
		1312/19	552830.52	4494414.48	35.66
		1312/18	552794.96	4494417.11	20.30
1312/6	742.03	1312/13	552760.54	4494440.01	36.85
		1312/14	552797.28	4494437.28	20.30
		1312/18	552794.96	4494417.11	36.31
		1312/16	552758.75	4494419.80	20.29
1313/1	3214.83	1313/1	552902.24	4494455.19	82.28
		1313/3	552879.15	4494376.21	42.83
		1313/4	552846.77	4494404.25	6.56
		1313/5	552844.92	4494410.54	62.31
		1313/6	552862.41	4494470.35	4.45
		1313/7	552866.47	4494472.17	39.60
		1313/2	552884.11	4494393.18	64.60
1313/2	2556.20	1313/1	552902.24	4494455.19	30.72
		1313/8	552929.99	4494442.02	4.50
		1313/9	552932.47	4494438.26	25.66
		1313/10	552933.40	4494412.62	9.43
		1313/11	552930.59	4494403.62	38.41
		1313/12	552907.56	4494372.88	31.02
		1313/2	552884.11	4494393.18	64.60
		1313/2	552884.11	4494393.18	31.02
1313/3	436.17	1313/12	552907.56	4494372.88	11.11
		1313/13	552900.89	4494363.99	6.82
		1313/14	552894.11	4494363.25	19.80
		1313/3	552879.15	4494376.21	17.68
		1313/3	552879.15	4494376.21	17.68